

Software

Nikon Transfer 2

Version 2.14

Reference Manual

- *This manual is available online in HTML format at:*

<https://nikonimglib.com/ntran2/onlinehelp/en/>

■ NX Studio

Pictures can be viewed and edited in NX Studio. A manual with information on using NX Studio is available from the websites below.

- *A pdf manual is available for download from the Nikon Download Center:*

[NX Studio Reference Manual \(PDF\)](#)

- *The contents of the manual can also be viewed online in HTML format at:*

<https://nikonimglib.com/nxstdo/onlinehelp/en/>

Table of Contents

About Nikon Transfer 2 3

About Nikon Transfer 24

The Nikon Transfer 2 Window5

Downloading Pictures 7

The Download Process.....8

Nikon Transfer 2: Panes 13

The **[Options]** Pane 14

The **[Thumbnails]** Pane26

The **[Transfer Queue]** Pane30

Menu List 31

The **[File]** Menu (Windows Only)32

The **[Nikon Transfer 2]** Menu (macOS Only).....33

The **[Edit]** Menu34

The **[View]** Menu.....35

The **[Window]** Menu36

The **[Help]** Menu37

Troubleshooting 38

Issues During Download.....39

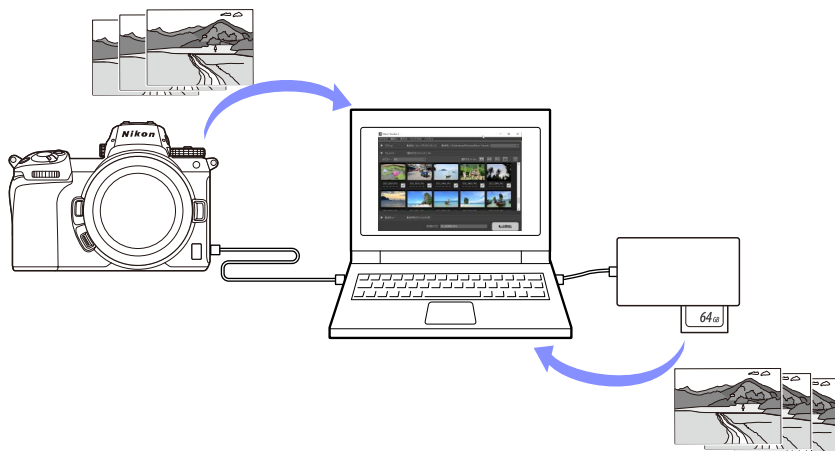
About Nikon Transfer 2

 [About Nikon Transfer 2](#)

 [The Nikon Transfer 2 Window](#)

About Nikon Transfer 2

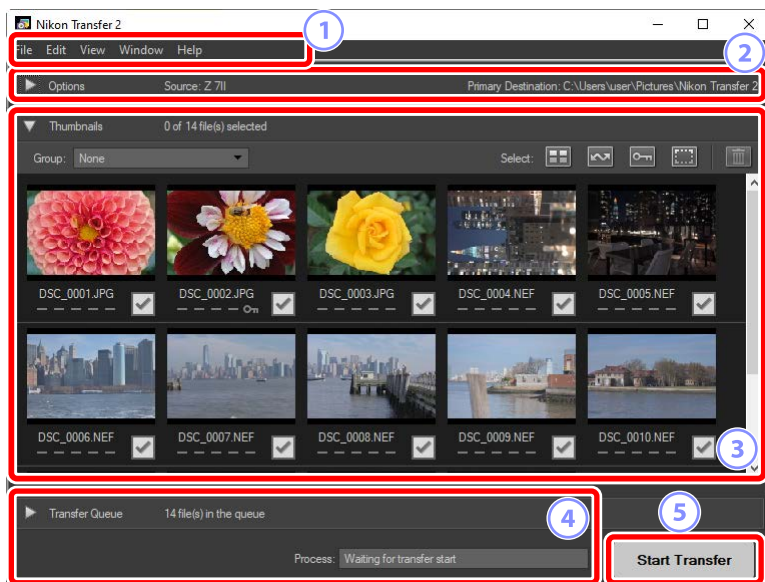
Use Nikon Transfer 2 to copy pictures from the camera to a selected folder on your computer. The pictures on the camera memory card can be viewed either by connecting the camera to the computer or by inserting the card in the computer's memory card slot (if available) or a third-party card reader. You can then choose pictures for transfer or download all the pictures from the memory card.



You can also perform a variety of other download tasks, such as renaming files or creating backups during transfer.

The Nikon Transfer 2 Window

The parts of the Nikon Transfer 2 window are shown below.



① The Menu Bar

Select menu options (📖 [“Menu List,”](#) page 31).

② The [Options] Pane

Use the **[Source]** and **[Primary Destination]** tabs to choose the device from which pictures will be downloaded and the folder on the computer in which the downloaded pictures will be stored. The **[Backup Destination]** and **[Preferences]** tabs are where you can create backups during download and adjust download settings (📖 [“The \[Options\] Pane,”](#) page 14).

③ The [Thumbnails] Pane

A list of thumbnail images showing the pictures on the source device. Pictures currently selected for download are indicated by check marks; turn the check marks on or off to choose pictures for download. At default settings, all pictures are selected (📖 [“The \[Thumbnails\] Pane,”](#) page 26).

④ The [Transfer Queue] Pane

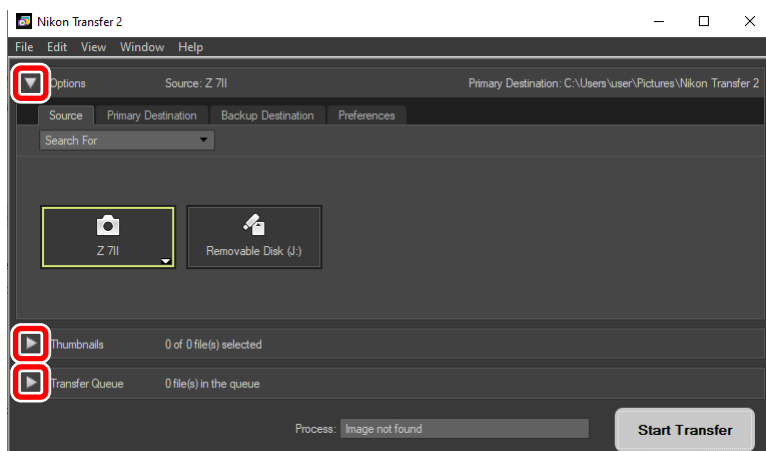
View download progress (📖 [“The \[Transfer Queue\] Pane”](#), page 30).

⑤ The [Start Transfer] Button

Click to download the pictures selected in the [Thumbnails] pane to the computer.

🔍 Viewing and Hiding Pane Content

Click ▾ and ▶ to view and hide the contents of the [Options], [Thumbnails], and [Transfer Queue] panes.



Downloading Pictures

📖 [The Download Process](#)

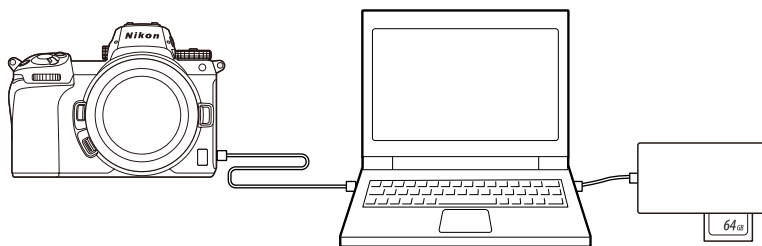
The Download Process

The basic steps involved in using Nikon Transfer 2 are as follows.

Step 1: Connect the Camera and Computer

After checking that there is a memory card inserted in the camera and turning the camera off, connect the camera to the computer using a compatible USB cable.

Alternatively, you could insert the memory card in the computer's memory card slot (if available) or a third-party card reader.



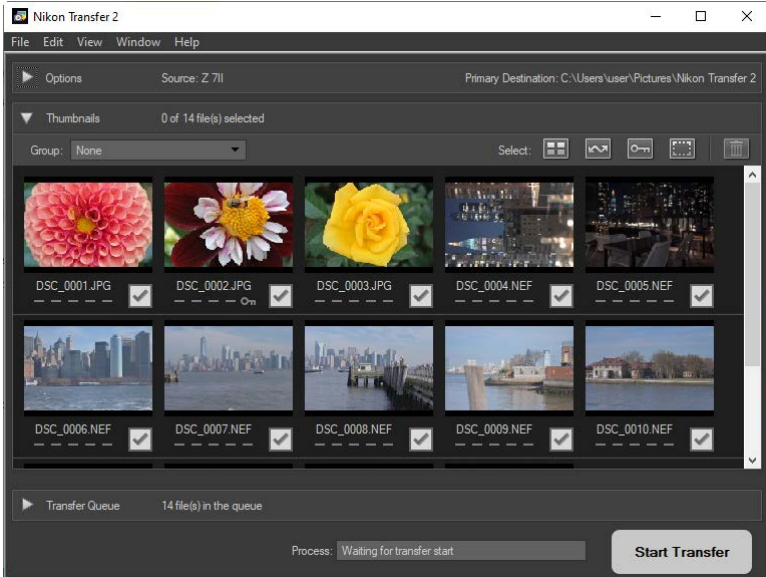
Using a Card Reader?

Confirm that it supports the type of memory card used in the camera.

Step 2: Launch Nikon Transfer 2

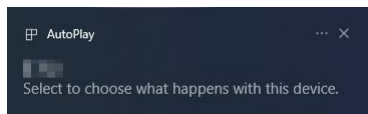
Turn the camera on; Nikon Transfer 2 should launch automatically. If it fails to launch automatically, you can launch it manually as described below.

- **Windows:** Double-click the Nikon Transfer 2 icon on the desktop.
- **macOS:** Go to the Launchpad and click the Nikon Transfer 2 icon in the “Nikon Software (Other)” folder.

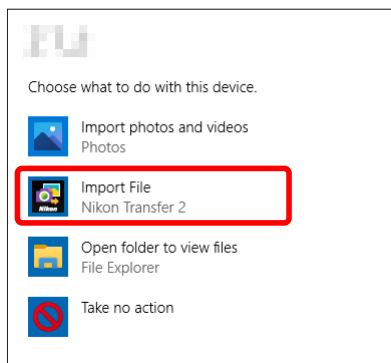


Windows 10

Depending on how it is configured, Windows 10 may display a prompt like this one.



In this event, click the dialog and then click **[Import File/Nikon Transfer 2]** to select Nikon Transfer 2. Nikon Transfer 2 will launch automatically the next time the computer detects the camera or its memory card.

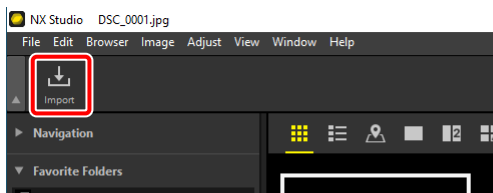


macOS

If Nikon Transfer 2 does not start automatically, confirm that the camera is connected and then launch Image Capture (software that comes with macOS) and select Nikon Transfer 2 as the software that starts when the camera is detected.

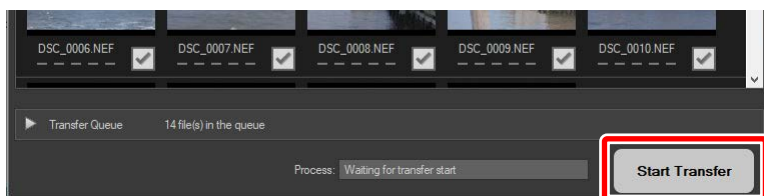
Launching Nikon Transfer 2 from NX Studio

If NX Studio is running, you can launch Nikon Transfer 2 by clicking **[Import]**.

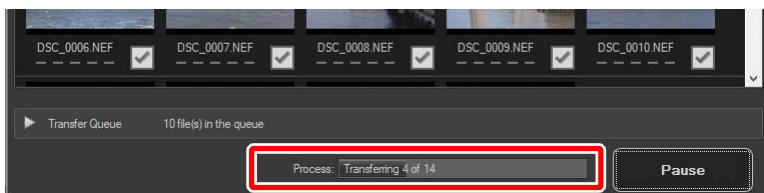



Step 3: Click **[Start Transfer]**

Click **[Start Transfer]** to start downloading the pictures from the memory card.



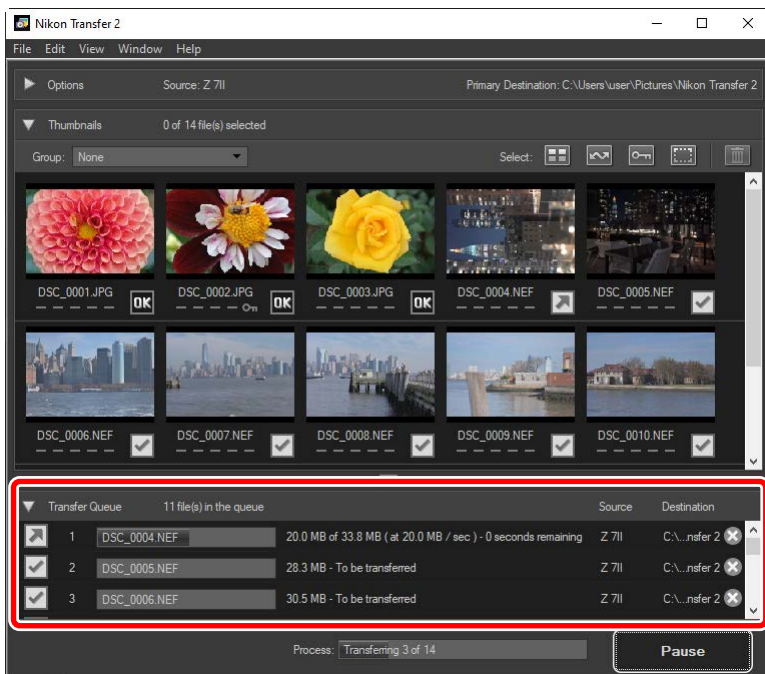
Current download status is shown in the **[Process]** bar as the number of pictures downloaded versus the total number of files in the queue. To pause download, click **[Pause]**.



- If no source is selected, Nikon Transfer 2 will display **[No Transfer Source Selected.]**. Expand the **[Options]** pane and select a source in the **[Source]** tab ( ["The \[Source\] Tab"](#), page 14).

Step 4: View Progress in the [Transfer Queue] Pane

The [Transfer Queue] pane lists the files being transferred and awaiting download. It also lists the time remaining, source, and destination.



When download is complete, the destination folder will open automatically and you will be prompted to exit Nikon Transfer 2. Click **[OK]** to exit.

Once downloaded, pictures can be viewed in NX Studio. NX Studio can be used to browse large numbers of pictures trouble-free and put the finishing touches on pictures by enhancing them in a variety of ways or adjusting RAW processing options. For information on using NX Studio, see NX Studio online help.

Nikon Transfer 2: Panes

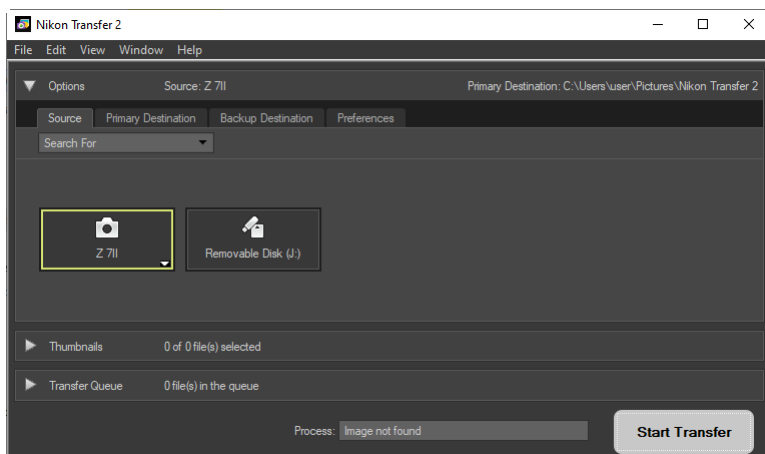
- 📖 [The \[Options\] Pane](#)
- 📖 [The \[Thumbnails\] Pane](#)
- 📖 [The \[Transfer Queue\] Pane](#)

The [Options] Pane


Perform a variety of tasks, including selecting the source device (the device from which pictures will be downloaded) and choosing a destination folder. The [Options] pane contains the following tabs: **[Source]**, **[Primary Destination]**, **[Backup Destination]**, and **[Preferences]**.

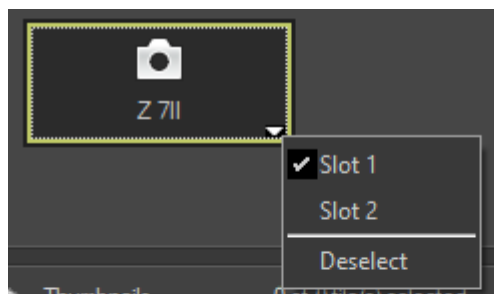
The [Source] Tab

This tab lists devices connected to the computer, including cameras, card readers, and card slots. When multiple cameras or removable media are connected, you can click a device containing pictures for download to select it as the source.



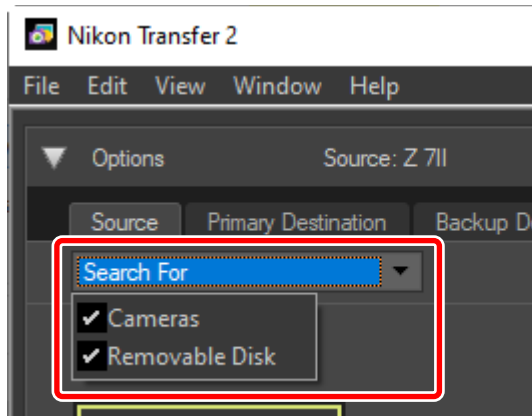
Multi-Slot Cameras

Click the  at the bottom right corner of the camera icon to choose a slot; the pictures on the card in the chosen slot will be displayed in the [Thumbnails] pane.



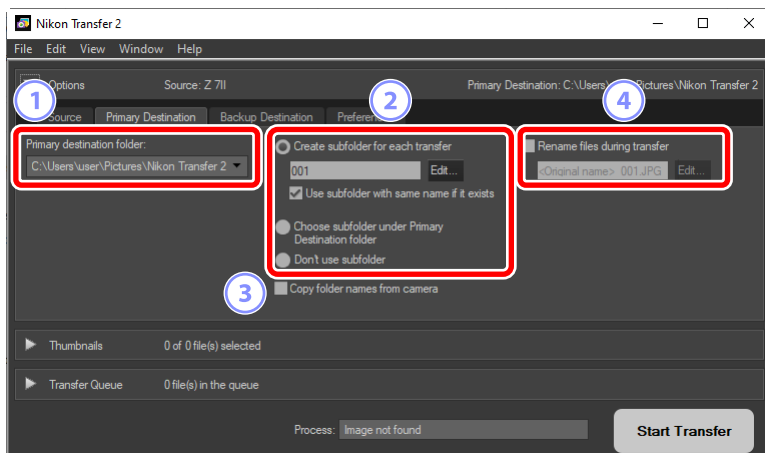
Limiting Device Selection

Use the [Search For] pull-down menu to choose the types of devices displayed in the [Source] tab from [Cameras] and [Removable Disk]. The tab will list buttons only for devices of the selected type.



The [Primary Destination] Tab

Choose a destination folder for the downloaded pictures. The tab also offers options for sub-folders and renaming downloaded pictures.



① [Primary destination folder]

Choose a destination folder for pictures downloaded from the source device. Folders that have previously served as destinations for downloaded pictures can be chosen from the pull-down menu. You can also choose a destination by selecting [**Browse**]. The path to the selected folder is listed as the [**Primary Destination**] in the top right corner of the pane.

② Subfolder Options

Choose whether to download files to sub-folders within the destination folder.

- **[Create subfolder for each transfer]**: With each transfer, a new sub-folder will automatically be created within the folder selected for **[Primary destination folder]**. To choose how the sub-folders are named, click **[Edit]**; a **[Folder Naming]** dialog will be displayed (📖 [“Folder Naming”](#), page 18). To only create a new sub-folder if one with the selected name does not already exist, select **[Use subfolder with same name if it exists]**.
- **[Choose subfolder under Primary Destination folder]**: Download pictures to a sub-folder within the folder selected for **[Primary destination folder]**. Enter the name of the sub-folder at the end of the **[Primary Destination]** path at the top of the transfer options area. If the selected sub-folder does not already exist, a new sub-folder will be created under the chosen name. You can also choose a previously-used sub-folder from the pull-down menu.
- **[Don't use subfolder]**: Download pictures directly to the folder selected for **[Primary destination folder]** instead of to a sub-folder within it.

③ [Copy folder names from camera]

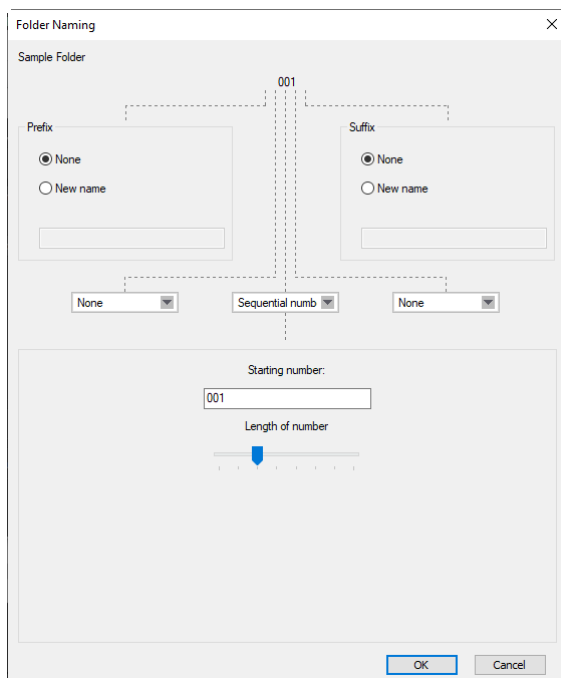
Download pictures to the folder selected for **[Primary destination folder]** employing the folder hierarchy and folder names used on the camera.

④ [Rename files during transfer]

Select this option to rename files automatically during download. To choose how files are named, click **[Edit]**; a **[File Naming]** dialog will be displayed (📖 [“File Naming”](#), page 19).

Folder Naming

Choose from the following naming options: **[Sequential number]**, **[Date Transferred]**, **[Date/Time Transferred]**, and **[Date Shot]**. The selected option forms the middle portion of the name, to which prefixes and suffixes can be added as desired.

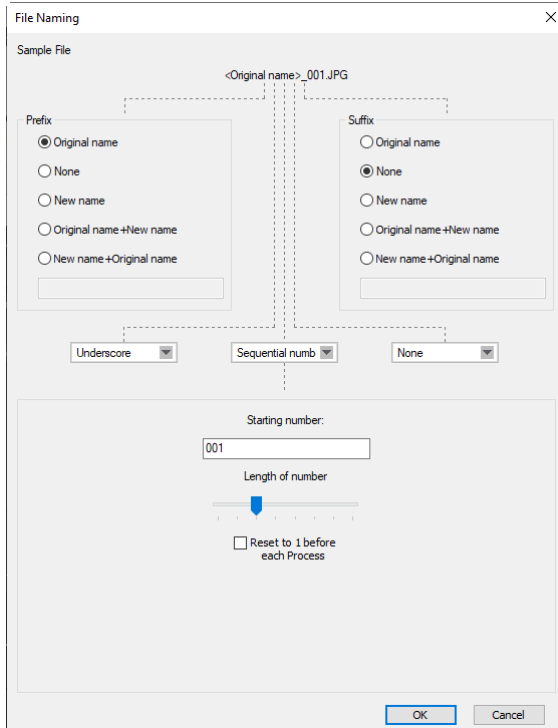


The dialog box is titled "Folder Naming" and has a close button (X) in the top right corner. It contains a "Sample Folder" field at the top showing "001". Below this, there are two main sections: "Prefix" and "Suffix". Each section has two radio buttons: "None" (selected) and "New name". Below the radio buttons are text input fields. In the center, there are three dropdown menus: "None", "Sequential numb", and "None". Below these, there is a "Starting number:" label and a text input field containing "001". Below that is a "Length of number" label and a slider control with a blue arrow pointing to the value 3. At the bottom right, there are "OK" and "Cancel" buttons.

- The items available vary with the option selected for the middle portion. They are listed in the lower part of the dialog.
- You can enter strings up to 110 characters long. Characters not permitted by the operating system cannot be used.
- An example of the names generated by the selected rules appears in the **[Sample Folder]** field at the top of the dialog. The sample updates automatically as you edit the rules.

File Naming

Choose from the following naming options: [**Sequential number**], [**Date/Time Transferred**], and [**Date Shot**]. The selected option forms the middle portion of the name, to which prefixes and suffixes can be added as desired. You can also opt not to include a middle portion by selecting [**None**].

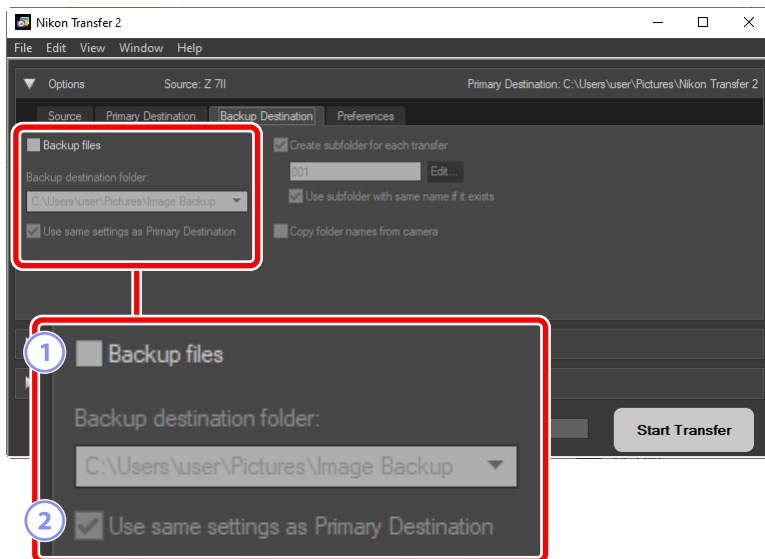


The dialog box is titled "File Naming" and has a close button (X) in the top right corner. It contains a "Sample File" field at the top showing "<Original name>_001.JPG". Below this are two main sections: "Prefix" and "Suffix". The "Prefix" section has radio buttons for "Original name" (selected), "None", "New name", "Original name+New name", and "New name+Original name", with a text input field below. The "Suffix" section has radio buttons for "Original name", "None" (selected), "New name", "Original name+New name", and "New name+Original name", with a text input field below. Below these are three dropdown menus: "Underscore", "Sequential numb", and "None". At the bottom, there is a "Starting number:" field with "001" entered, a "Length of number" slider set to 3, and a checkbox "Reset to 1 before each Process" which is unchecked. "OK" and "Cancel" buttons are at the bottom right.

- The items available vary with the option selected for the middle portion. They are listed in the lower part of the dialog.
- You can enter a string up to 110 characters long. Characters not permitted by the operating system cannot be used.
- An example of the names generated by the selected rules appears in the [**Sample File**] field at the top of the dialog. The sample updates automatically as you edit the rules.

The [Backup Destination] Tab

Pictures can be backed up to a separate folder during download.

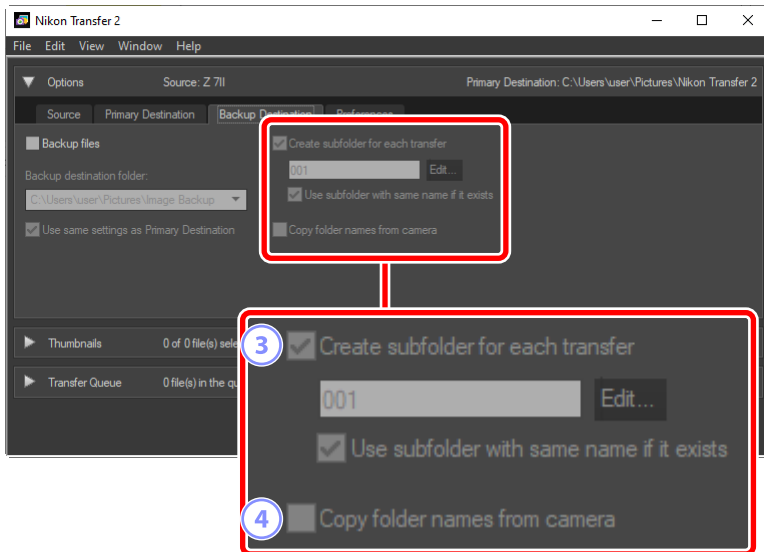


① [Backup files]

Select this option to create backup copies of pictures during download. The pictures will be copied to the folder selected for [**Backup destination folder**]. You can choose a previously-used folder from the pull-down menu or click [**Browse**] and select a new folder.

② [Use same settings as Primary Destination]

Select this option to use the sub-folder options selected in the [**Primary Destination**] tab when creating backups.



③ [Create subfolder for each transfer]

A new sub-folder will automatically be created within the folder selected for **[Backup destination folder]** with each transfer. To choose how the sub-folders are named, click **[Edit]**; a **[Folder Naming]** dialog will be displayed ([“Folder Naming,”](#) page 18). To only create a new sub-folder if one with the selected name does not already exist, select **[Use subfolder with same name if it exists]**.

④ [Copy folder names from camera]

Copy pictures to the folder selected for **[Backup destination folder]** employing the folder hierarchy and folder names used on the camera.

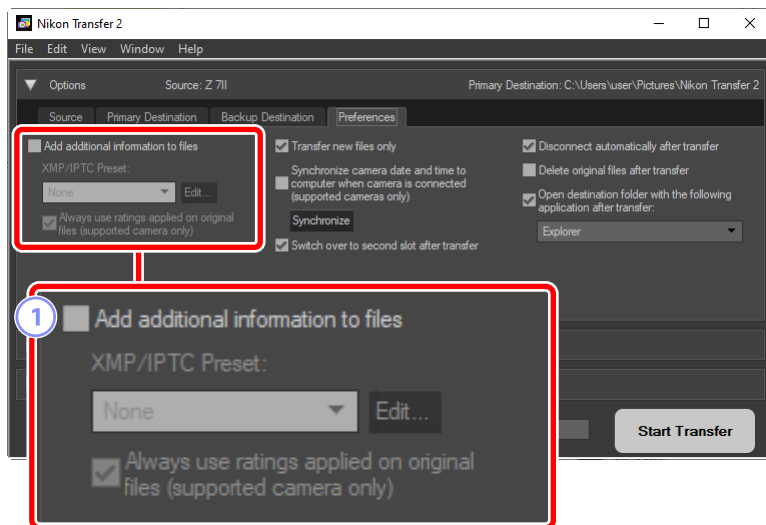
Choosing a Backup Folder

A warning will be displayed and no backup copies will be created if the backup folder is either:

- the same as the folder selected in the **[Primary Destination]** tab, or
- contained within the download destination folder.

The [Preferences] Tab

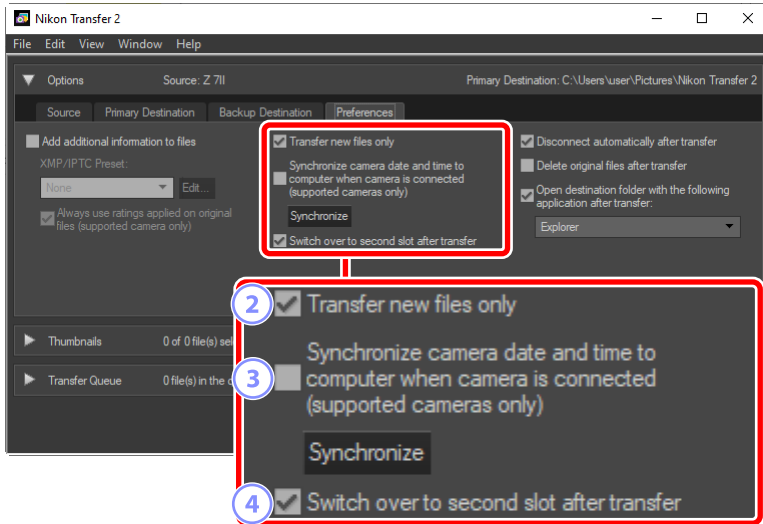
Perform such tasks as choosing the information added to pictures during download and the operations performed after download.



① [Add additional information to files]

Select this option to add XMP/IPTC metadata to files during download.

- **[XMP/IPTC Preset]:** Choose a saved preset from the pull-down menu. To manage XMP/IPTC presets, click **[Edit]** ([“XMP/IPTC Presets”](#), page 25).
- **[Always use ratings applied on original files (supported camera only)]:** Select this option to give ratings assigned using the camera priority over the ratings in XMP/IPTC presets.



② **[Transfer new files only]**

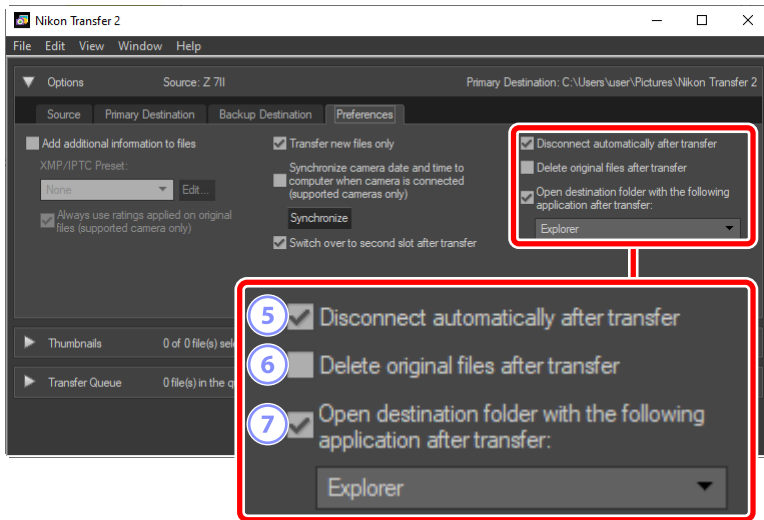
Select this option to prevent previously-downloaded files being downloaded again when you click **[Start Transfer]**.

③ **[Synchronize camera date and time to computer when camera is connected (supported cameras only)]**

Select this option to automatically synchronize the camera to the computer clock when the devices are connected. Clicking **[Synchronize]** sets the clocks on connected cameras to the time currently reported by the computer.

④ **[Switch over to second slot after transfer]**

If this option is selected when a camera with multiple card slots is connected, you will be prompted to download pictures from the second card once all pictures on the first card have been downloaded.



5 [Disconnect automatically after transfer]

If this option is selected, connections to all memory cards not inserted in a camera will end automatically when download is complete.

- Connections to cameras are not affected.
- Note that this option applies to all memory cards currently inserted in card slots or in card readers connected to the computer.

6 [Delete original files after transfer]

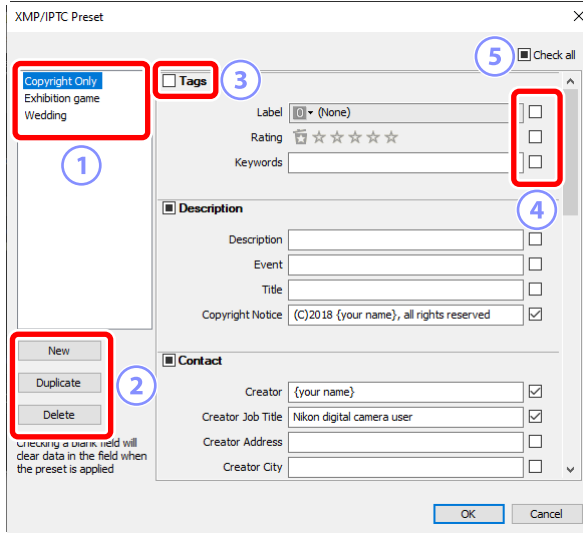
Select this option to automatically delete files from the camera or memory card when download is complete. Files not included in the download or that are marked as protected on the camera will not be deleted.

7 [Open destination folder with the following application after transfer]

Select this option to launch the software chosen in the pull-down menu when transfer is complete.

XMP/IPTC Presets

The following options are available for managing XMP/IPTC presets.



The screenshot shows the 'XMP/IPTC Preset' dialog box. It has a title bar with a close button. The dialog is divided into several sections. On the left, there is a list of presets: 'Copyright Only', 'Exhibition game', and 'Wedding'. Below this list are three buttons: 'New', 'Duplicate', and 'Delete'. To the right of the list is a checkbox labeled 'Tags'. Further right is a 'Check all' checkbox. Below these are several input fields: 'Label' (set to '(None)'), 'Rating' (five stars), 'Keywords', 'Description' (with sub-fields for Description, Event, Title, and Copyright Notice), and 'Contact' (with sub-fields for Creator, Creator Job Title, Creator Address, and Creator City). Each of these input fields has a small square checkbox to its right. The dialog also has 'OK' and 'Cancel' buttons at the bottom right.

1. Preset List

2. [New]/[Duplicate]/[Delete] buttons

3. Tags checkbox

4. Item Check Boxes (small square checkboxes next to input fields)

5. Check all checkbox

1 The Preset List

A list of existing presets.

2 [New]/[Duplicate]/[Delete]

Create, duplicate, or delete XMP/IPTC presets.

3 Category Check Boxes

Select or deselect all items in the chosen category.

4 Item Check Boxes

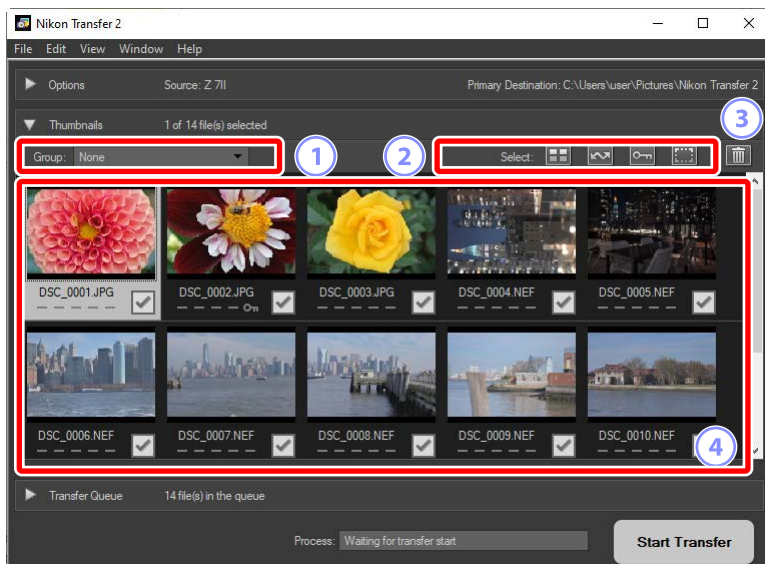
The selected items will be added to picture metadata during download. Selecting an item while leaving the field blank sets the field to "Clear". Any previously-chosen values for the selected item will be deleted when the pictures are downloaded.

5 [Check all]

Select or deselect all items in the XMP/IPTC preset.

The [Thumbnails] Pane

This pane lists thumbnail images showing the pictures on the camera or memory card. Pictures currently selected for download are indicated by check marks; turn the check marks on or off to choose pictures for download. At default settings, all pictures are selected. Information such as image attributes and transfer status is displayed on each thumbnail. Thumbnails can be filtered by category.



① [Group]

Group thumbnails by attribute. Choose from **[Date Shot]**, **[Extension]**, and **[Folder]**.

② [Select]

Select files by attribute.

- : Select all files for download.
- : Select for download only files marked for upload on the camera.
- : Select for download only files marked as protected on the camera.
- : Remove download marking from all files.

3 Delete

Delete all selected files from the camera or memory card.

4 Thumbnails

The pictures on the camera or memory card are listed here. Highlight thumbnails by clicking them.

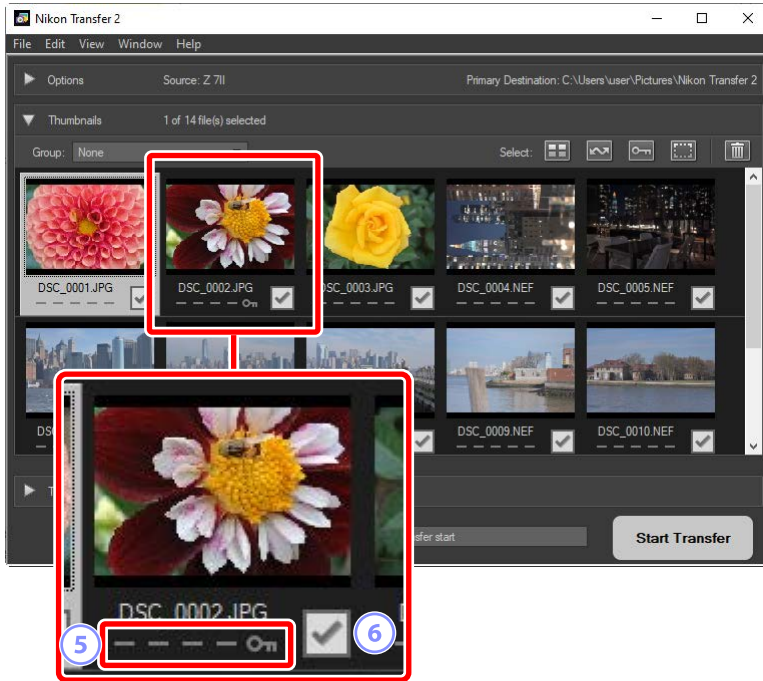
Selecting Multiple Pictures

Multiple pictures can be selected by pressing the control (or in macOS, command) key and clicking each thumbnail in turn. You can select one thumbnail and press shift while clicking a second to select the two pictures and all pictures in between.

Compatible File Types

The types of files that can be downloaded using Nikon Transfer 2 are listed below, together with their file extensions. Non-image files are shown by an icon identifying the file type.

- JPEG (".jpg")
- TIFF (".tif", ".tiff")
- NEF (".nef")
- NRW (".nrw")
- MOV (".mov")
- MP4 (".mp4")
- AVI (".avi")
- NDF (".ndf")
- WAV (".wav")
- MPO (".mpo")
- LOG (".log")
- LGA (".lga")
- LGB (".lgb")



5 Attribute Icons

Picture attributes are shown by icons. A description of the chief attribute icons follows.

- : Dual-format RAW (NEF/NRW) and JPEG pictures
- : Pictures with voice memos
- : Videos
- : Files marked as protected on the camera

6 Download Status

Download status is shown by a check box. Click the check box to select or deselect pictures for download.

- : Picture selected for download
- : Picture not selected for download
- : Download in progress
- : Download complete

Dual-Format (RAW + JPEG) Pictures

Dual-format RAW (NEF/NRW) + JPEG pictures are represented by a single thumbnail. Both the RAW and JPEG copies will be downloaded to the computer during transfer.






- Dual-format copies recorded to separate memory cards using **[RAW Slot 1 - JPEG Slot 2]** will be listed separately as independent files.
- Dual-format pictures will also be listed separately as independent files if the RAW and JPEG copies have different file names.

Sequences

Each sequence of pictures shot using the Smart Photo Selector, burst photography, or Motion Snapshot is listed as a single file. Selecting a sequence for transfer downloads all pictures it contains.

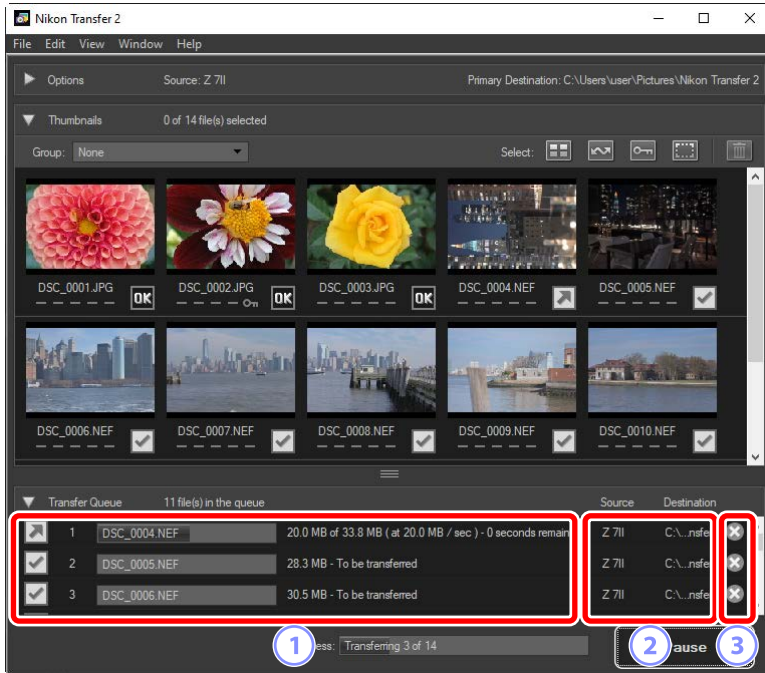
Other Attributes

Files of the following types are also identified by attribute icons:

- : 3D pictures in MPO format
- : Pictures shot using the Smart Photo Selector
- : Pictures in bursts shot in continuous release modes
- : Motion Snapshots
- : Pictures selected for upload on the camera

The [Transfer Queue] Pane

View download progress.



① Transfer Queue

A list of the files being transferred and awaiting download. A progress bar and the time remaining is displayed while each picture is downloaded.

② [Source]/[Destination]

The source device and destination folder for the file in question.

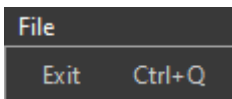
③ Delete

Click this button to deselect the file and remove it from the transfer queue.

Menu List

- 📖 [The \[File\] Menu \(Windows Only\)](#)
- 📖 [The \[Nikon Transfer 2\] Menu \(macOS Only\)](#)
- 📖 [The \[Edit\] Menu](#)
- 📖 [The \[View\] Menu](#)
- 📖 [The \[Window\] Menu](#)
- 📖 [The \[Help\] Menu](#)

The [File] Menu (Windows Only)



[Exit]

Exit Nikon Transfer 2.

The [Nikon Transfer 2] Menu (macOS Only)



[About Nikon Transfer 2]

View version information.

[Quit Nikon Transfer 2]

Quit Nikon Transfer 2.

The [Edit] Menu

Edit	
Undo	Ctrl+Z
Cut	Ctrl+X
Copy	Ctrl+C
Paste	Ctrl+V
Delete	DEL
Select Files	▶
Select All	Ctrl+A
Deselect	

[Delete]

Delete the pictures currently selected in the **[Thumbnails]** pane. This command can also be used while download is paused to remove from the download queue the pictures currently selected in the **[Transfer Queue]** pane.

[Select Files]

Select files that meet the criteria specified via the sub-menu.

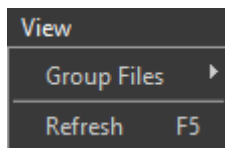
[Select All]

Select all files.

[Deselect]

Deselect all selected files.

The [View] Menu



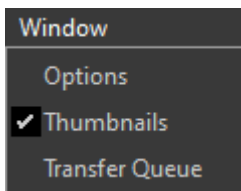
[Group Files]

Group the pictures in the **[Thumbnails]** pane by date shot, extension, or folder.

[Refresh] (Windows Only)

Update the list of devices in the **[Options]** pane.

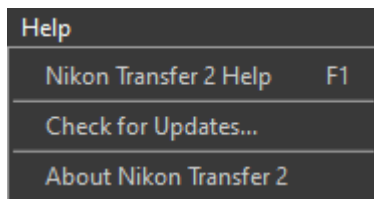
The [Window] Menu



[Options]/[Thumbnails]/[Transfer Queue]

View or hide selected panes.

The [Help] Menu



[Nikon Transfer 2 Help]

View help.

[Check for Updates]

Check for updates to Nikon Transfer 2.

[About Nikon Transfer 2] (Windows Only)

View version information.

Troubleshooting

 [Issues During Download](#)

Issues During Download

Check the following if you have trouble downloading pictures.

CDs and DVDs Are Not Listed in the [Source] Tab

Nikon Transfer 2 cannot be used to copy files between CDs, DVDs, and hard disks. Copy the files directly or use the import tools supplied with the computer operating system.

Files Cannot Be Transferred

- Is the camera or memory card listed in the **[Source]** tab of the **[Options]** pane? If not, check that the camera is on and properly connected or that the memory card is properly inserted in the card reader or memory card slot.
- Is the device button for the desired camera or memory card disabled in the **[Source]** tab of the **[Options]** pane? Click the device button to select the desired camera or removable media.

NX Studio Does Not Launch When Download Is Complete

- Confirm that a check appears next to **[Open destination folder with the following application after transfer]** in the **[Options]** pane **[Preferences]** tab and that **[NX Studio]** is selected in the pull-down menu.
- Were all the files on the camera or memory card downloaded previously? If **[Transfer new files only]** is selected in the **[Preferences]** tab of the **[Options]** pane and there are no new files to download, no files will be downloaded and NX Studio or any other selected software will not start.